



Volt

Release Notes



ZHEJIANG DAHUA VISION TECHNOLOGY CO., LTD.

Table of Contents

1 Release Notes.....	1
1.1 V2.840.0000000.30.....	1
1.2 V2.840.0000000.28.....	1
1.3 V2.840.0000000.27.....	1
1.4 V2.840.0000000.26.....	2
1.5 Software Environment.....	3
2 Update Guide.....	5
2.1 Introduction.....	5
2.2 Preparation.....	5
2.3 Instructions.....	5
2.3.1 Updating by ConfigTool.....	5
2.3.2 Updating through the Webpage.....	7
2.3.3 Cloud Update through the Webpage.....	8
2.3.4 Cloud Update through DMSS.....	8
2.4 Checking for Update Success	9
2.4.1 Checking the Result of Update by ConfigTool.....	9
2.4.2 Checking the Result of Update through the Webpage.....	10
2.4.3 Checking the Result of Update through DMSS.....	10

1 Release Notes

1.1 V2.840.0000000.30

Release Date

February 27, 2025

Fixed Bugs

- This version fixes some bugs, improves the product performance, and strengthens product security on the basis of the last version.

Third-party Access

- CGI testing tool: V2.91.3.12.
- ONVIF testing tool: V22.12.
- ONVIF: Supports Profile S, Profile T and Profile G.

1.2 V2.840.0000000.28

Release Date

August 15, 2024

Fixed Bugs

- This version fixes some bugs, improves the product performance, and strengthens product security on the basis of the last version.

Third-party Access

- CGI testing tool: V2.91.3.12.
- ONVIF testing tool: V22.12.
- ONVIF: Supports Profile S, Profile T and Profile G.

1.3 V2.840.0000000.27

Release Date

March 22, 2024

Fixed Bugs

- Fixed the issue that recorded videos in the SD card could not be played on DMSS when accounts were logged in.

Third-party Access

- CGI testing tool: V2.91.3.12.
- ONVIF testing tool: V22.12.
- ONVIF: Supports Profile S, Profile T and Profile G.

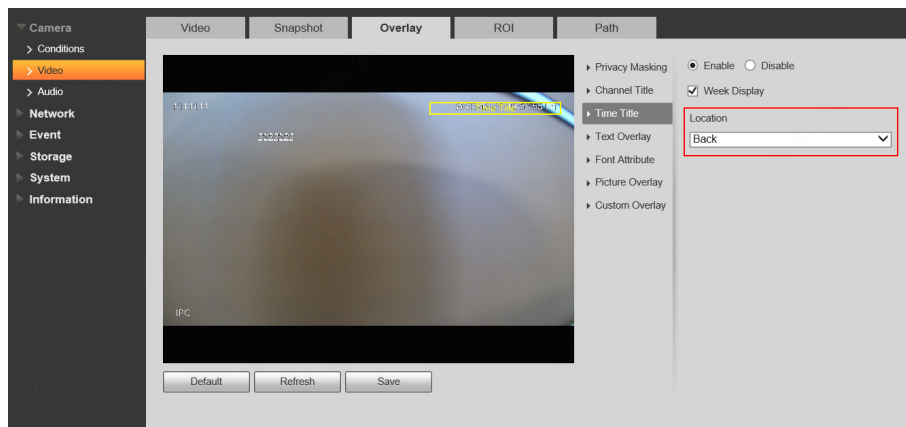
1.4 V2.840.0000000.26

Release Date

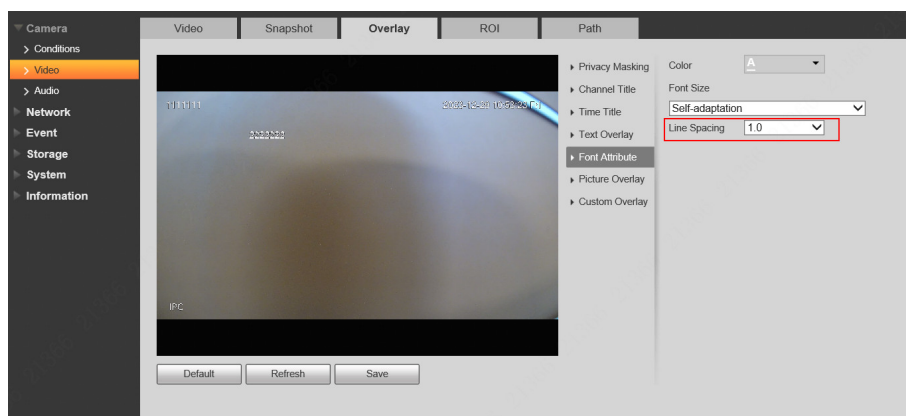
December 21, 2023

New Features

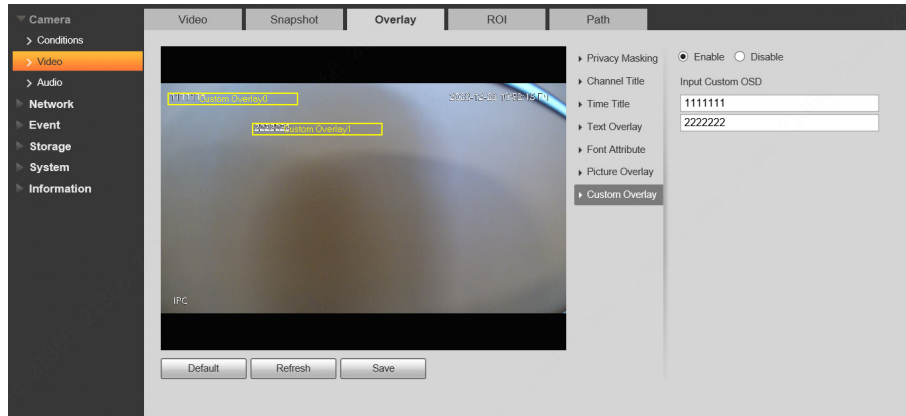
- Supports overlaying week, and you can set the display location.



- Supports setting line spacing of video overlay.



- Supports customizing OSD, and you can set the location of each line.



- Security Baseline V2.2 and V2.3.
- Supports enabling and disabling LLDP on DoLink Care.
- Supports standard UTC.
- Redirects to the device webpage without entering password.

Optimized Features

- Auto registration supports redirection.
- Auto registration supports domain name.
- Updated IVS algorithm.
- Updated people counting algorithm.

Fixed Bugs

- K1 series products failed to upload a single face image to the face database.
- The coordinates of the uploaded face image were wrong, resulting in inaccurate overlay detection box on the platform.
- Controls of different products were incompatible when installed on the same computer.
- The focal length restored to default settings after the device restarted.
- The videos of two channels were not synchronized, with a difference of 1 or 2 seconds.
- CGI heartbeat command did not take effect.
- The people counting OSD data is inconsistent with the report data.
- P2P was displayed online, but cannot be added due to configuration import and export.
- After searching for SMD videos on DMSS, all videos were displayed.
- Failed to control the blue and red lights of TIOC on DMSS.

Third-Party Access

- CGI testing tool: V2.91.3.12.
- ONVIF testing tool: V22.12.
- ONVIF: Supports Profile S, Profile G and Profile T.

1.5 Software Environment

Category	Model	Version
NVR	NVR5XXX-EI	DH_NVR5XXX-EI_MultiLang_V4.000.0000000.1.R.230725.zip

Category	Model	Version
DSS/PSS	DSS Pro	General_DSS-Professional_Server_Win64_IS_V8.003.0000000.0.R.20230701.exe
DSS/PSS	PSS Lite	General_SmartPSSLite_MultiLang_Win64_IS_V1.003.0000003.1.R.230620.zip
Tool	ConfigTool	General_ConfigTool_ChnEng_V5.001.0000002.0.R.20230223.zip
App	DMSS	Download the latest version.

2 Update Guide

2.1 Introduction

This document provides multiple update methods for the IPCs. Users can update the IPCs to the latest version according to the update guide. The update methods include updating by ConfigTool and DMSS app, through local update package, and cloud update on the webpage.

2.2 Preparation

Before the update, please ensure that the following conditions are met.

- Update by ConfigTool: The device can work normally; the computer is installed with ConfigTool; the device is on the same network as the computer; the update package is ready.
- Update by local package: The device can work normally; the device is on the same network as the computer that is used to log in to the webpage; the update package is ready.
- Cloud update on the webpage: The device can work normally and is connected to Internet; the device is on the same network as the computer that is used to log in to the webpage.
- Update by DMSS app: The device can work normally; the mobile phone is installed with DMSS app; the device is added to DMSS app.



- Check whether the device model and program version are correct before the update.
- Decompress the compressed program package when updating by the ConfigTool and through the local package.

2.3 Instructions

2.3.1 Updating by ConfigTool

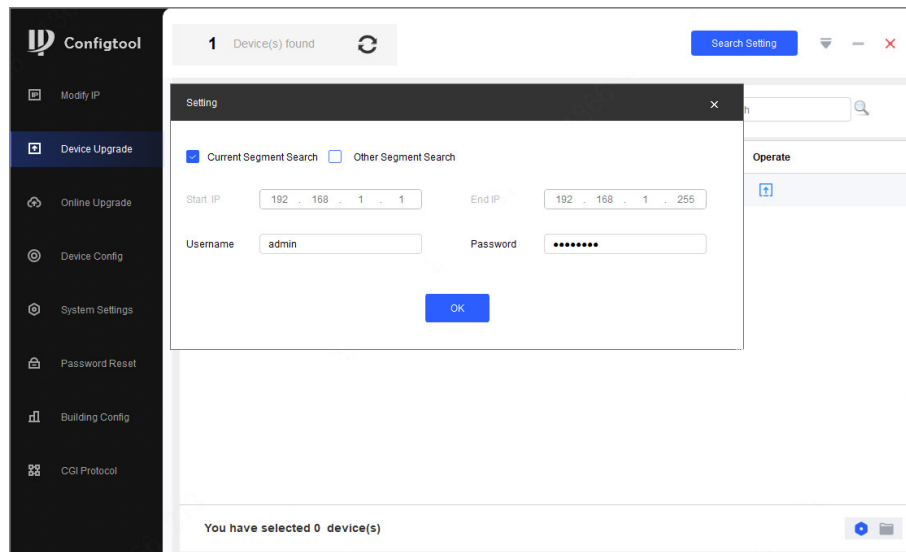
2.3.1.1 Updating One by One

Use this update method when you need to update a single device.

Procedure

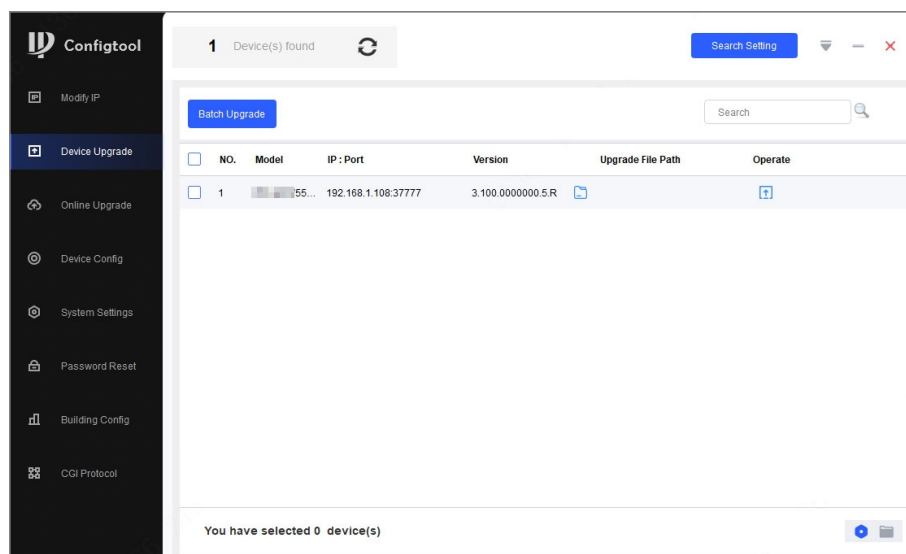
- Step 1 Open ConfigTool, and then select **Device Upgrade**.
- Step 2 Click **Search Setting** to set the search conditions.


Figure 2-1 Set search condition



Step 3 Select **Current Segment Search**, change the password to the IPC password, and then click **OK**.

Figure 2-2 View search result



Step 4 Click  next to the device to be updated, and then select the update file.

Step 5 Click  to start to update the system.

The device automatically restarts after the update is complete.



If the system update fails, check the prompt on the ConfigTool to see the reason.

2.3.1.2 Updating in Batches

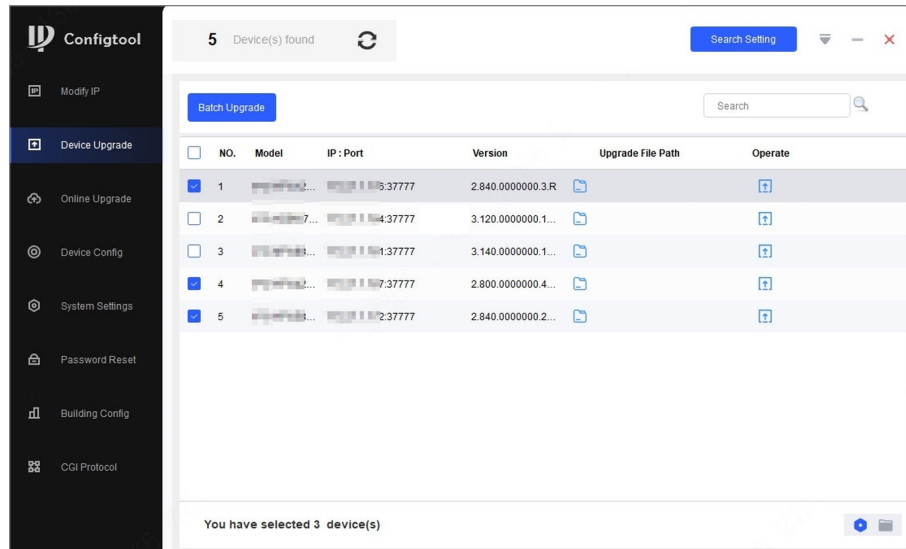
Use this method when you need to update multiple devices to the same software version.

Procedure

Step 1 Open ConfigTool, and then select **Device Upgrade**.

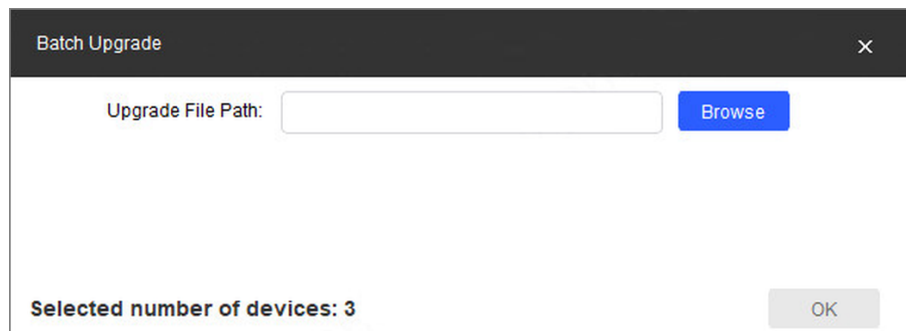
- Step 2 Click **Search Setting** to set the search conditions.
- Step 3 Select **Current Segment Search**, change the password to the IPC password, and then click **OK**.

Figure 2-3 View search result



- Step 4 Select the device to be updated, and then click **Batch Upgrade**.
- Step 5 Click **Browse** to select the update package.

Figure 2-4 Select update package



- Step 6 Click **OK** to start to update the system.
- The device automatically restarts after the update is complete.



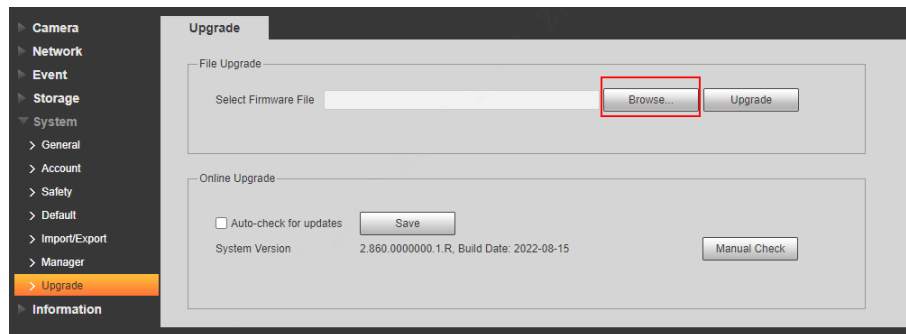
If the system update fails, check the prompt on the ConfigTool to see the reason.

2.3.2 Updating through the Webpage

Procedure

- Step 1 Log in to the webpage of the device.
- Step 2 Select **Settings** > **System** > **Update** to enter the system update page.

Figure 2-5 System update



Step 3 Click **Browse** , select the update file, and then click **Update**.

Do not cut off the power supply during the update process. The device automatically restarts when the update is complete.

Step 4 After the restart, you are redirected to the login page for you to log in to the device again.

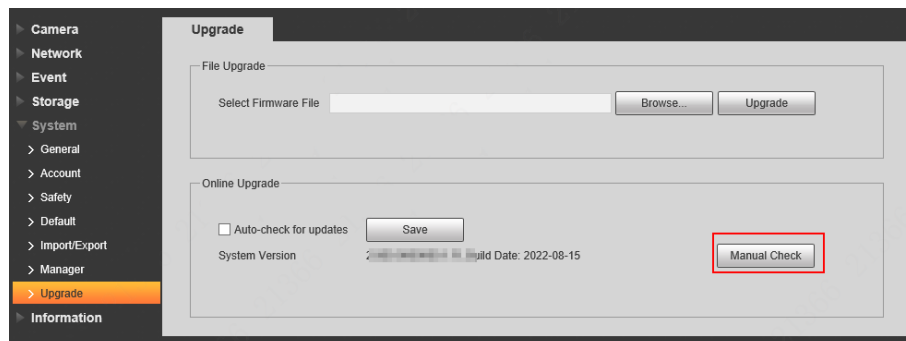
2.3.3 Cloud Update through the Webpage

Procedure

Step 1 Log in to the webpage of the device.

Step 2 Select **Settings** > **System** > **Update** to enter the system update page.

Figure 2-6 System update



Step 3 Click **Manual Check**.

Select Auto-check, and when a new version is available, the device automatically detects it.

Step 4 If a new version is available, click **Update Now**. The system downloads the version file and starts the update process.

Step 5 After the restart, you are redirected to the login page for you to log in to the device again.

2.3.4 Cloud Update through DMSS

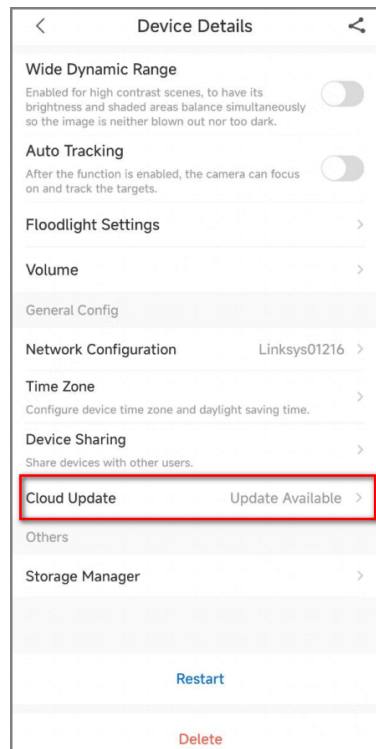
Procedure

Step 1 Open DMSS app.

Step 2 Select **Device Details**.

If it displays **Update Available** on **Cloud Update** area, then there is available new version for update.

Figure 2-7 Device details



- Step 3 Tap **Cloud Update** to go to the update page.
- Step 4 Confirm the **Current Version** and **Latest Version**, and then tap **Update**.
- Step 5 After being updated successfully, the device will restart.

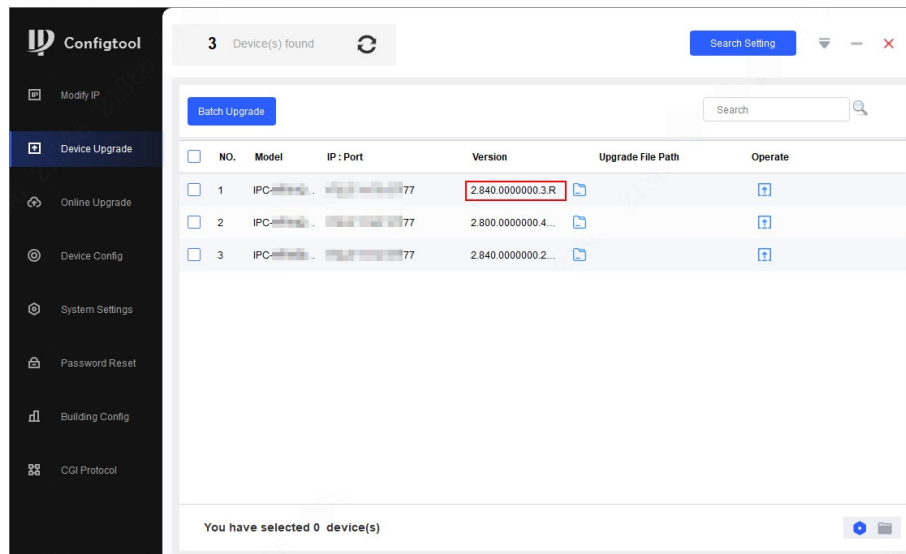
2.4 Checking for Update Success

2.4.1 Checking the Result of Update by ConfigTool

After the update is complete, wait until the device restarts. Click  to check the system version.

If the version is the same as the software version of the update package, it means the update is successful.

Figure 2-8 Check version information

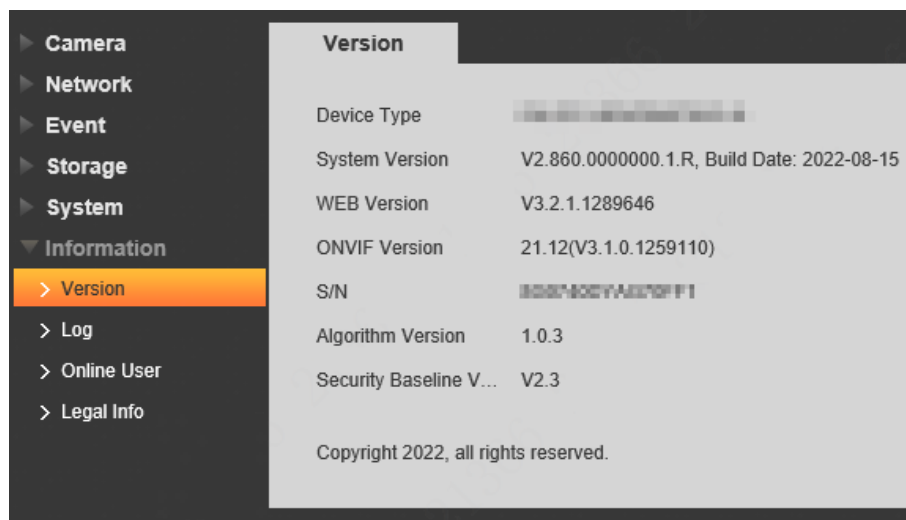


2.4.2 Checking the Result of Update through the Webpage

Procedure

- Step 1 Log in to the webpage of the device.
- Step 2 Select **Settings** > **Information** > **Version** to check the update result.

Figure 2-9 Check update result

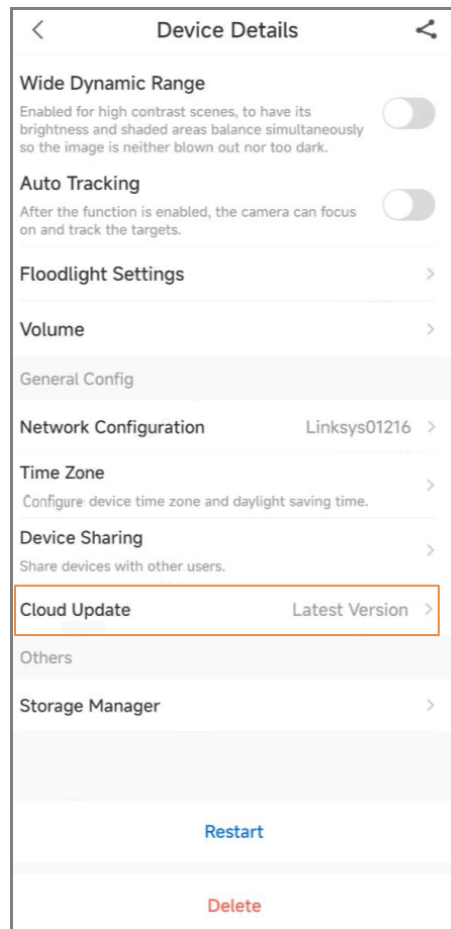


2.4.3 Checking the Result of Update through DMSS

Procedure

- Step 1 Open DMSS app.
- Step 2 Select **Device Details**.
- Step 3 Confirm that you have updated to the latest version.

Figure 2-10 Device details



ENABLING A SMARTER SOCIETY AND BETTER LIVING

ZHEJIANG DAHUA VISION TECHNOLOGY CO., LTD.

Address: No. 1399, Binxing Road, Binjiang District, Hangzhou, P. R. China | Website: www.dahuasecurity.com | Postcode: 310053

Email: dhoverseas@dhvisiontech.com | Tel: +86-571-87688888 28933188