



DH_XVR4x08-I3(V2.0)_MultiLang V4.004.00000000.0.R.250523

Release Notes



Table of Contents

1 Release Notes.....	1
1.1 Overview.....	1
1.2 New Features.....	1
1.2.1 AI Dashboard.....	2
1.2.2 Quick Initialization.....	2
1.2.3 Page of Channel Name.....	3
1.2.4 Email Body and Attachment Options.....	3
1.2.5 Remote Arming and Disarming of IPC.....	4
1.2.6 Camera SMD.....	4
1.2.7 Custom Layout.....	4
1.3 Fixed Bugs.....	5
1.4 Compatibility.....	5
1.4.1 Program.....	5
1.4.2 Third-party Access.....	5
1.5 Software Environment.....	6
1.6 Pending Issues.....	6
1.7 Update Guide.....	6

1 Release Notes

1.1 Overview

Product name	Digital Video Recorder
Version	V4.004.0000000.0.R.250523
Software package information	DH_XVR4x08-I3(V2.0)_MultiLang_V4.004.0000000.0.R.250523.zip
OS requirement	None
Release date	May 30, 2025

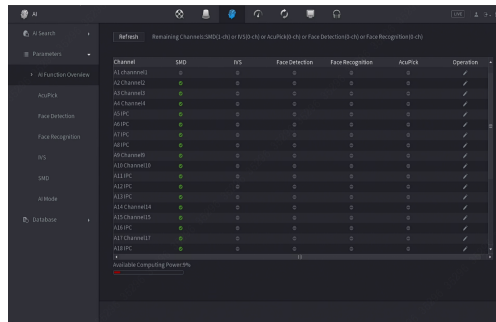
1.2 New Features

Feature	Description
AI Dashboard	You can view and edit the AI dashboard and see the status of the remaining AI computing power, as well as whether the AI function is enabled.
Quick Initialization	Supports the quick device initialization to reduce the need for manual setup by the user.
Page of Channel Name	You can view the channel names and edit them on the page.
Wi-Fi Module	Supports connecting to Wi-Fi modules for Dahua NC650 and NC300.
Email Body and Attachment Options	When configuring email reporting, you can choose to send images either in the email body or as attachments.
Remote Arming and Disarming of IPC	By clicking the one-click disarm button, you can control the one-click disarm function for the front-end IP cameras that are connected to the device.
Camera SMD	The IPC that is compatible with XVR through the private protocol supports SMD.
Custom Layout	You can customize the layout and switching settings for the XVR.
Preview without Plug-in on Webpage	You can view videos from 16 channels on the webpage without plug-in.
Improved AI Function	SMD can be used with the one-click extension function.

1.2.1 AI Dashboard

You can view and edit the AI dashboard and see the status of the remaining AI computing power, as well as whether the AI function is enabled.

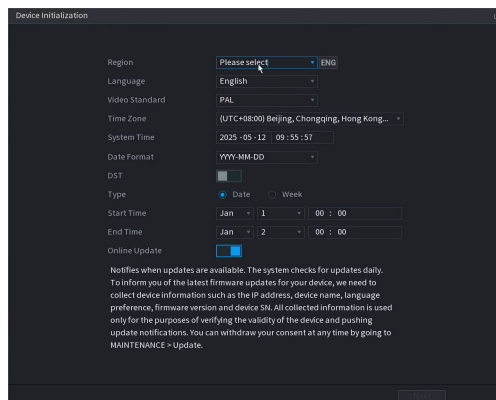
Go to **Main Menu** > **AI** > **AI Function Overview**, and you can view the AI status of analog channels. The page will refresh to display the status of available AI channels, the supported AI types, and the configurations for those AI functions, along with the remaining computing power percentage.



Channel	MD	IS	Face Detection	Face Recognition	Acacia	Operation
AI Channel1	0	0	0	0	0	✓
AI Channel2	0	0	0	0	0	✓
AI Channel3	0	0	0	0	0	✓
AI Channel4	0	0	0	0	0	✓
AI Channel5	0	0	0	0	0	✓
AI Channel6	0	0	0	0	0	✓
AI Channel7	0	0	0	0	0	✓
AI Channel8	0	0	0	0	0	✓
AI Channel9	0	0	0	0	0	✓
AI Channel10	0	0	0	0	0	✓
AI Channel11	0	0	0	0	0	✓
AI Channel12	0	0	0	0	0	✓
AI Channel13	0	0	0	0	0	✓
AI Channel14	0	0	0	0	0	✓
AI Channel15	0	0	0	0	0	✓
AI Channel16	0	0	0	0	0	✓
AI Channel17	0	0	0	0	0	✓
AI Channel18	0	0	0	0	0	✓
AI Channel19	0	0	0	0	0	✓
AI Channel20	0	0	0	0	0	✓
AI Channel21	0	0	0	0	0	✓
AI Channel22	0	0	0	0	0	✓
AI Channel23	0	0	0	0	0	✓
AI Channel24	0	0	0	0	0	✓
AI Channel25	0	0	0	0	0	✓
AI Channel26	0	0	0	0	0	✓
AI Channel27	0	0	0	0	0	✓
AI Channel28	0	0	0	0	0	✓
AI Channel29	0	0	0	0	0	✓
AI Channel30	0	0	0	0	0	✓
AI Channel31	0	0	0	0	0	✓
AI Channel32	0	0	0	0	0	✓
AI Channel33	0	0	0	0	0	✓
AI Channel34	0	0	0	0	0	✓
AI Channel35	0	0	0	0	0	✓
AI Channel36	0	0	0	0	0	✓
AI Channel37	0	0	0	0	0	✓
AI Channel38	0	0	0	0	0	✓
AI Channel39	0	0	0	0	0	✓
AI Channel40	0	0	0	0	0	✓
AI Channel41	0	0	0	0	0	✓
AI Channel42	0	0	0	0	0	✓
AI Channel43	0	0	0	0	0	✓
AI Channel44	0	0	0	0	0	✓
AI Channel45	0	0	0	0	0	✓
AI Channel46	0	0	0	0	0	✓
AI Channel47	0	0	0	0	0	✓
AI Channel48	0	0	0	0	0	✓
AI Channel49	0	0	0	0	0	✓
AI Channel50	0	0	0	0	0	✓
AI Channel51	0	0	0	0	0	✓
AI Channel52	0	0	0	0	0	✓
AI Channel53	0	0	0	0	0	✓
AI Channel54	0	0	0	0	0	✓
AI Channel55	0	0	0	0	0	✓
AI Channel56	0	0	0	0	0	✓
AI Channel57	0	0	0	0	0	✓
AI Channel58	0	0	0	0	0	✓
AI Channel59	0	0	0	0	0	✓
AI Channel60	0	0	0	0	0	✓
AI Channel61	0	0	0	0	0	✓
AI Channel62	0	0	0	0	0	✓
AI Channel63	0	0	0	0	0	✓
AI Channel64	0	0	0	0	0	✓
AI Channel65	0	0	0	0	0	✓
AI Channel66	0	0	0	0	0	✓
AI Channel67	0	0	0	0	0	✓
AI Channel68	0	0	0	0	0	✓
AI Channel69	0	0	0	0	0	✓
AI Channel70	0	0	0	0	0	✓
AI Channel71	0	0	0	0	0	✓
AI Channel72	0	0	0	0	0	✓
AI Channel73	0	0	0	0	0	✓
AI Channel74	0	0	0	0	0	✓
AI Channel75	0	0	0	0	0	✓
AI Channel76	0	0	0	0	0	✓
AI Channel77	0	0	0	0	0	✓
AI Channel78	0	0	0	0	0	✓
AI Channel79	0	0	0	0	0	✓
AI Channel80	0	0	0	0	0	✓
AI Channel81	0	0	0	0	0	✓
AI Channel82	0	0	0	0	0	✓
AI Channel83	0	0	0	0	0	✓
AI Channel84	0	0	0	0	0	✓
AI Channel85	0	0	0	0	0	✓
AI Channel86	0	0	0	0	0	✓
AI Channel87	0	0	0	0	0	✓
AI Channel88	0	0	0	0	0	✓
AI Channel89	0	0	0	0	0	✓
AI Channel90	0	0	0	0	0	✓
AI Channel91	0	0	0	0	0	✓
AI Channel92	0	0	0	0	0	✓
AI Channel93	0	0	0	0	0	✓
AI Channel94	0	0	0	0	0	✓
AI Channel95	0	0	0	0	0	✓
AI Channel96	0	0	0	0	0	✓
AI Channel97	0	0	0	0	0	✓
AI Channel98	0	0	0	0	0	✓
AI Channel99	0	0	0	0	0	✓
AI Channel100	0	0	0	0	0	✓

1.2.2 Quick Initialization

- Supports the quick device initialization to reduce the need for manual setup by the user.
- After the device has started up, you will enter the configuration page for initializing options such as country or region settings. Choose your country or region, as well as the language, video standard, time zone, time format, and DST options. Click NEXT to enter the password setup page, where you can decide whether to set an unlock pattern and enable password protection. After agreeing to the software agreement and privacy policy, click Next to proceed to the next step and start the quick initialization.



Device Initialization

Region: Please select (dropdown menu)

Language: English (dropdown menu)

Video Standard: PAL (dropdown menu)

Time Zone: (UTC+08:00) Beijing, Chongqing, Hong Kong... (dropdown menu)

System Time: 2025-05-12 09:55:57

Date Format: YYYY-MM-DD (dropdown menu)

DST: ☐ Daylight Saving Time

Type: ☒ Date ☐ Week

Start Time: Jan 1 00:00

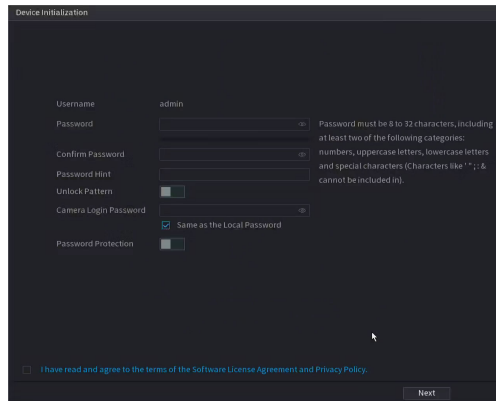
End Time: Jan 2 00:00

Online Update: ☒ Online Update

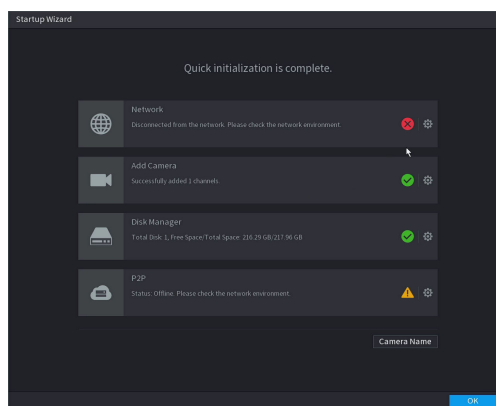
Notifies when updates are available. The system checks for updates daily.

To inform you of the latest firmware updates for your device, we need to collect device information such as the IP address, device name, language preference, firmware version and device SN. All collected information is used only for the purposes of verifying the validity of the device and pushing update notifications. You can withdraw your consent at any time by going to MAINTENANCE > Update.

NEXT



- Quick initialization: Supports DHCP for automatic IP allocation; allows you to check the status of connected cameras; enables you to monitor disk status; supports configuring P2P online status; allows you to change channel names.

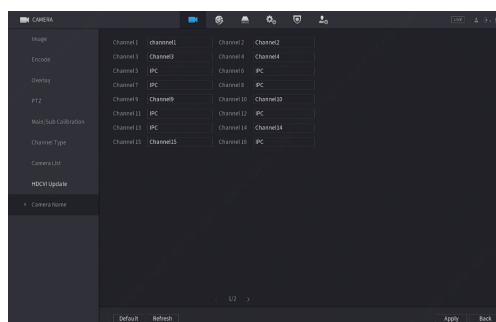


- Finish initialization.

1.2.3 Page of Channel Name

You can view the channel names and edit them on the webpage.

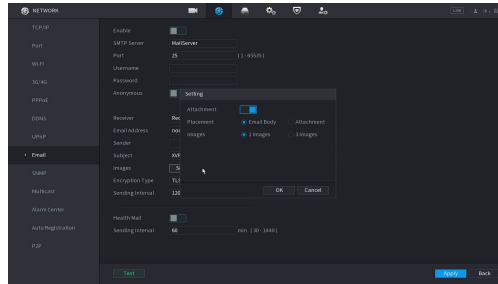
Go to **Main Menu > CAMERA > Camera Name**, all the channel names will be displayed on the page and you can edit them.



1.2.4 Email Body and Attachment Options

When configuring email reporting, you can choose to send images either in the email body or as attachments.

Go to **Main Menu > NETWORK > Email**, you can enable the image configuration and set how to send image via email.

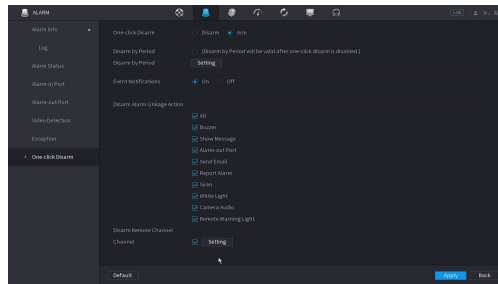


After the configuration is complete, the images will be reported as you specified.

1.2.5 Remote Arming and Disarming of IPC

By clicking the one-click disarm button, you can control the one-click disarm function for the front-end IP cameras that are connected to the device.

Go to **Main Menu > ALARM > One-click Disarm**, you can disarm the remote channels on the arming and disarming page.



For the selected remote channels, you can enable or disable the arming and disarming function for IPC.

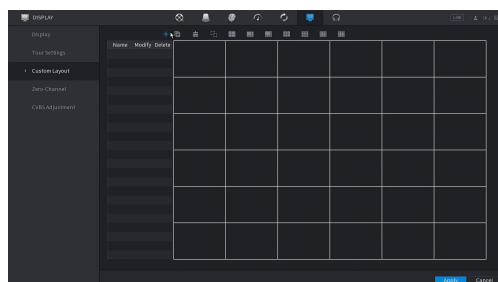
1.2.6 Camera SMD


- The IPC that is compatible with XVR supports SMD.
- You can enable SMD for IPC, and set the SMD type to person or vehicle.
- You can configure the linkage for IPC SMD.
- Supports passing SMD events from IPC to the platform, DMSS app, SmartPSS Lite and other clients.


1.2.7 Custom Layout


You can customize the layout and switching settings for the XVR.


Go to **Main Menu > DISPLAY > Custom Layout**, you can customize a layout for channels.



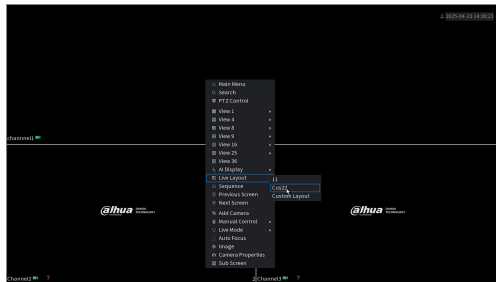
Click  to create a layout. The channel number will be added to the layout you create. You can select the editing button on the channel to replace it. After creating the layout, you can left-click and drag channels within the layout to merge them together.

Click  to select the starting channel, then add channels to the layout in batches.

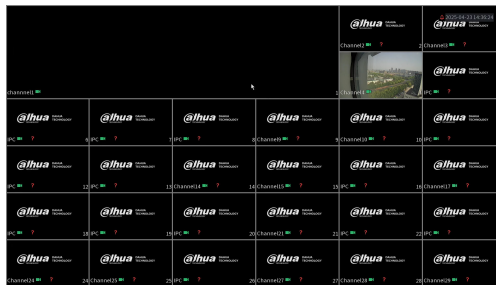
Click  to delete all the related channels, then configure the channels in the layout again.

Click  to undo the merged channels.

After setting the layout, right-click on the device preview page, select live layout, and then choose your specified layout to apply it.



For example:



1.3 Fixed Bugs

Fixed some issues.

1.4 Compatibility

1.4.1 Program

This new version is V4.004.0000000.0.R and the security baseline version is 2.4. If the earlier baseline programs (V4.003.0000002.0.R and earlier) are updated to this version, you can not revert them to the earlier version.

1.4.2 Third-party Access

ONVIF testing tool version: V24.12.

ONVIF: Supports Profile T, Profile S and Profile G.

1.5 Software Environment

Category	Model	Version
	NetSDK	General_NetSDK_Eng_Win64_I S_V3.058.0000004.0.R.241125
	ConfigTool	General_ConfigTool_ChnEng_ V5.001.0000005.1.R.20250113
	SmartPSS Lite	General_SmartPSSLite_MultiLa ng_Win64- Install_IS_V1.003.0000008.2.R. 250120
DMSS	/	V2.0.30
DoLynk Care	/	V2.50.20

1.6 Pending Issues

None.

1.7 Update Guide

Please update the product in the following steps.

1. You can update the device through ConfigTool, webpage and USB flash drive. For details, see the update guide.
2. During the update, the device will stop some services, such as recording and live view. After the update, restart the device.
3. The update does not affect the previous configuration.
4. Do not disconnect the power supply during the update. Otherwise the device might not be able to start normally.

ENABLING A SMARTER SOCIETY AND BETTER LIVING