

DH-EEC400-D

Dahua Data Collection Station



- Downloads recording files from MPT230 series Body Camera and charges them when they are connected.
- Supports searching for files by time, user ID, type and more. It can search for videos, audios and images under type.
- The Body Camera firmware can be manually or automatically updated.
- Up to 4 hard drives with 16 TB each can be installed.

Series Overview

Data Collection Station is a work station that collects, stores and manages videos, audios, and images from Body Camera. It is useful for data management, such as searching for and playing recording files and marking important files. The firmware of Body Camera can be upgraded and Body Camera are automatically charged at the station when they are connected.

Functions

Safe Storage

The embedded Linux system enables the device to work stably and avoid system security issues.

Convenient Operations

Supports performing device and data management through the HDMI screen and webpage.

Data Management

The system simplifies file management and allows you to effortlessly monitor video recording downloads and the charging status of the Body Camera. Additionally, you can conveniently update the Body Camera program using the HDMI screen and webpage. The system also supports playing and searching for video recordings based on various criteria such as the time, user ID and file type.

Device Management

Connects up to 8 MPT230 series body camera simultaneously, facilitating automatic data download and charging of the devices upon connection. Additionally, it offers the convenience of automatic or manual firmware updates for body cameras.

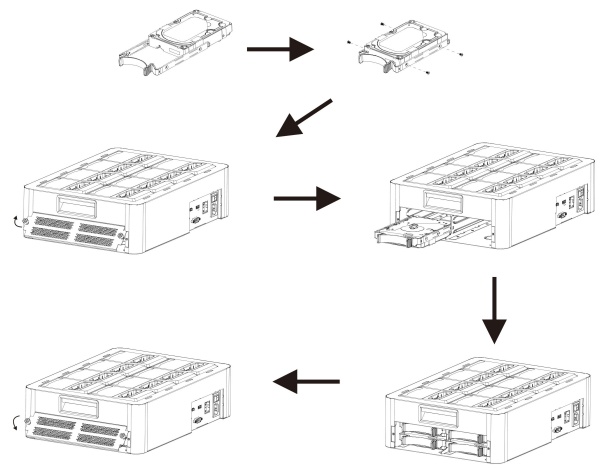
Technical Specification

System	
Main Processor	Industrial-grade embedded controller
Operating System	Embedded Linux
External Port	
Network Port	1 × RJ-45 gigabit Ethernet ports
USB	2 (USB2.0 & USB3.0)
RS-232	1
Disk Interface	4× SATA3.0; max. 16 TB for one HDD. Use at least 2 HDDs for optimal collection speed
HDMI	1 (1920×1080@60 Hz)
Function	
Device Access Status Indication	Yes
Device Update	Supports updating MPTs or body cameras automatically or manually; Supports local or online updating of collection station
Auto Acquisition	Yes
Priority Acquisition	Yes
Web Configuration	Yes
FTP	Yes
Performance	
Collection Speed	Max. downloading speed: 64 MB/s
General	
Power Adapter	3-core power port
Power Supply	100–240 VAC, 50/60 Hz
Power Consumption	Single control module (no HDD): 7 W
Product Dimensions	398.8 mm × 280.0 mm × 107.0 mm (15.70" × 11.02" × 4.21")
Packaging Dimensions	477.0 mm × 373.0 mm × 249.0 mm (18.78" × 14.69" × 9.80")
Operating Temperature	−10 °C to +55 °C (+14 °F to +131 °F)
Operating Humidity	0%–90% (RH), non-condensing
Operating Environment	Indoor
Net Weight	5.30 kg (11.69 lb) (without disks)
Gross Weight	7.00 kg (15.44 lb)

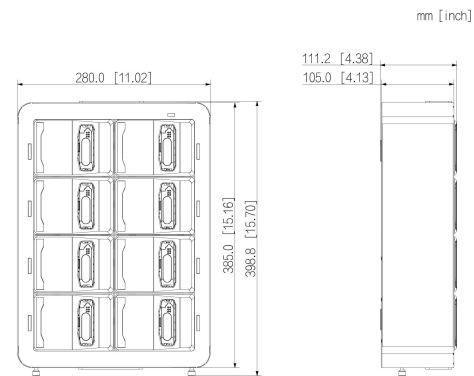
Ordering Information

Type	Model	Description
Data Collection Station	DH-EEC400-D	Dahua Data Collection Station

Installation



Dimensions (mm[inch])



Panels

