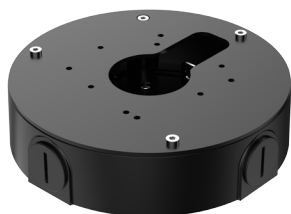


DH-PFA13F-E-B

Junction Box



- Built of aluminum alloy and SGCC material.
- Matched with particular cameras, beautiful and elegant designed.



Series Overview

The Junction Box is beautifully designed and highly convenient. Cables can be organized in it and there are outlets at the bottom and side of the box, making it easy to install and use.

Scene

Ideal for mounting cameras, and works in temperatures ranging from -40°C to $+60^{\circ}\text{C}$ (-40°F to $+140^{\circ}\text{F}$) and in environments with a relative humidity of less than 90%.

Technical Specification

Structure

Casing Material	Aluminum alloy, SGCC
Product Dimensions	$\Phi 162.0\text{ mm} \times 43.4\text{ mm}$ ($\Phi 6.38" \times 1.71"$)
Appearance Color	Black
Net Weight	0.79 kg (1.74 lb)
Gross Weight	0.91 kg (2.01 lb)
Load Bearing	3.0 kg (6.61 lb)
Installation	Junction mount
Screw Thread Type	G3/4
Applicable Model	Please see "Camera Accessories Selection"
Packaging Dimensions	$177\text{ mm} \times 177\text{ mm} \times 52\text{ mm}$ ($6.97" \times 6.97" \times 2.05"$) (L x W x H)

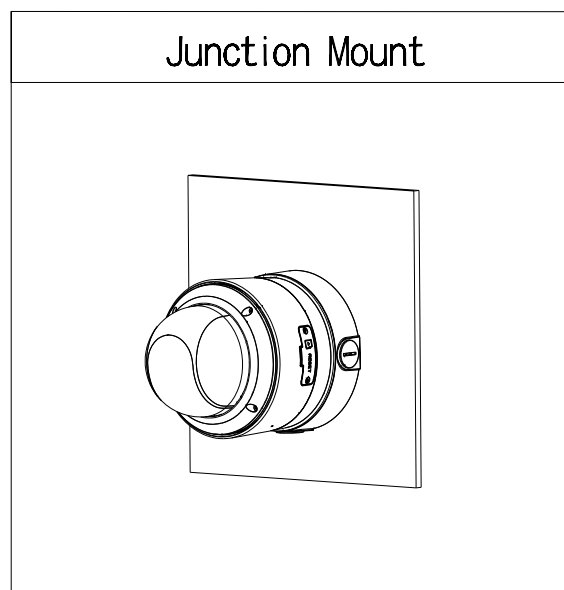
Environment

Operating Temperature	-40°C to $+60^{\circ}\text{C}$ (-40°F to $+140^{\circ}\text{F}$)
Operating Humidity	<90% (RH)
Storage Temperature	-40°C to $+60^{\circ}\text{C}$ (-40°F to $+140^{\circ}\text{F}$)
Storage Humidity	10%–90% (RH)
Anti-corrosion Level	Basic Protection

Ordering Information

Type	Model	Description
Camera Mount	DH-PFA13F-E-B	Junction Box

Installation



Dimensions (mm[inch])

Package Information

- Junction box × 1
- M4×8 screw × 4
- ST6×45 screw × 4
- Plastic anchor × 4
- T15L wrench × 1

