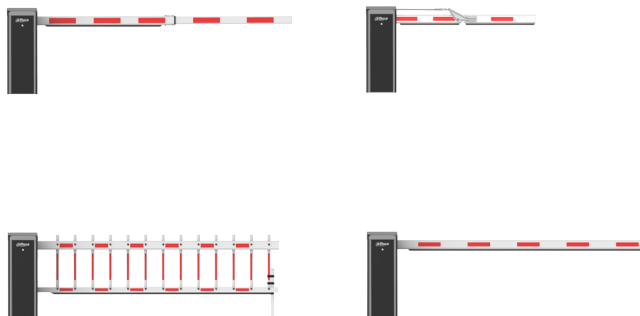


DHI-IPMECD-105 Series

Barrier (Straight arm /Telescopic arm/Folding arm/Fence arm)



System Overview

The Boom Gate helps control the flow of vehicles accessing parking lots and other related scenes. It consists of a top cover, case, transmission mechanism, control box, and arm. To meet the needs of different locations, it comes in 4 different styles: straight arm, telescopic arm, folding arm and fence arm.

Functions

DC Brushless Motor

Equipped with an integrated DC brushless motor, it is highly stable, quiet and has a long lifespan.

Secure and Reliable

As it is powered by 24 VDC low voltage, it is both secure and stable.

Multi-dimensional Anti-smashing

It supports anti-smash through external radar and loop. The arms are also designed with elastic anti-smashing rubber strips at the bottom, and automatically rise when vehicles approach and fall when vehicles depart.

High Quality

The anti-corrosive case is made of cold-rolled plate and underwent the metal stamping process, making it strong and highly durable. It is strong enough to resist impacts of different strengths and is resistant to deformation. It is IP54 rated, making it suitable for use outdoors in different weather types.

Scene

Suitable for use in entrances and exits of office and government buildings, hotels, scenic spots, schools, residential areas, airports, factories and more.

- Comes with a metal sheet housing, and an anti-rust case that was treated with electrostatic spray.
- 24 VDC brushless motor that is quiet, highly secure, low power consumption, stable and efficient.
- The speed and position at which the barrier rises and falls is adjustable.
- Digital screen that displays the error code and operation status of the device.
- Supports external radar, loop, and the IR anti-smashing function. It also has a built-in 12 VDC output for powering the external radar.
- Automatically rises when the barrier arm makes contact with an object.
- Supports manually rising the barrier after a power failure.
- With rolling code technology, the device is highly secure and supports remote control at a maximum distance of 50 m (164 ft).
- Enters fleet mode by remote control to allow multiple vehicles to pass.
- Counts the number of times the barrier rises and falls.
- Supports configuring the time and speed for delaying the descent of the barrier.
- The spring can withstand 800,000 uses.
- Operating temperature: -35°C to $+65^{\circ}\text{C}$ (-31°F to $+149^{\circ}\text{F}$).
- Operating humidity: 10%–90%.
- External voltage: 220 VAC $\pm 10\%$ or 110–120 VAC (it can be changed with the DIP switch).
- Operating voltage: 24 VDC.
- IP54 rated.

Technical Specification

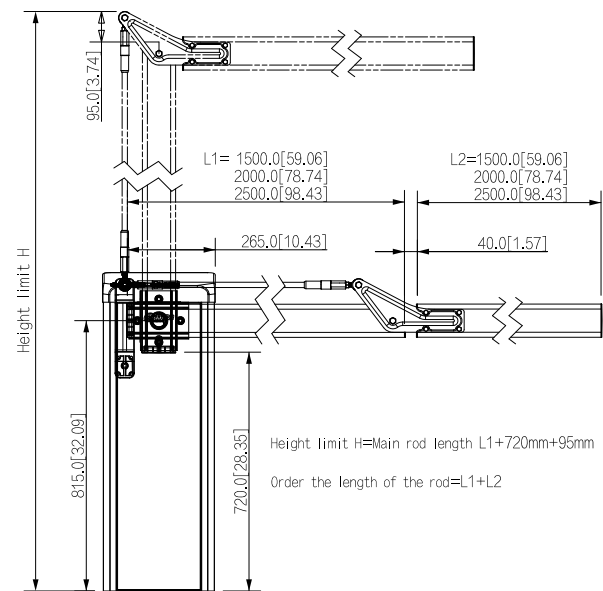
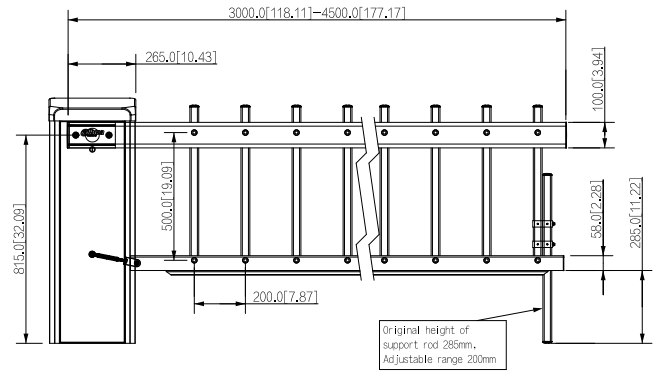
Basic

Arm Type	Straight arm; Telescopic arm; Folding arm; Fence arm (All system standard with anti-smash rubber strip)
Arm Length	Straight arm: 3 m (9.84 ft) Telescopic arm: 2.7 m–4.5 m (8.86 ft–14.76 ft); 4.5 m–6.0 m (14.76 ft–19.69 ft); Folding arm: 3 m (1.5+1.5)(9.84 ft); 4 m (1.5+2.5)(13.12 ft); 5 m (2.5+2.5)(16.40 ft) Fence arm: 3 m (9.84 ft); 3.5 m (11.48 ft); 4 m (13.12 ft); 4.5 m (14.76 ft)
Arm Model	IPMECD-015X Series
Opening/Closing Time	Straight arm: 3 m (9.84 ft):1.5S Telescopic arm: 2.7 m–4.5 m (8.86 ft–14.76 ft):4.8S ; 4.5 m–6.0 m (14.76 ft–19.69 ft):5.5S Folding arm: 3 m (1.5+1.5)(9.84 ft):2.8S; 4 m (1.5+2.5)(13.12 ft):3S; 5 m (2.5+2.5)(16.40 ft):5S Fence arm: 3 m (9.84 ft):3.5S; 3.5 m (11.48 ft):4.2S; 4 m (13.12 ft):5.5S; 4.5 m (14.76 ft):6S
Motor Type	DC brushless
Spring	2 \times 4.5 mm (0.18") springs

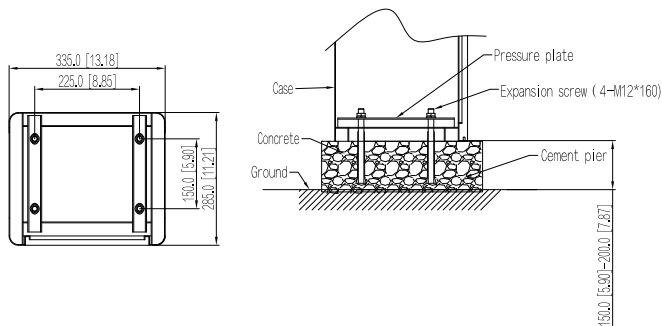
Sub 1G Modulation Type	ASK
Sub 1G Frequency Range	433.82–434.02 MHz
Sub 1G Power Transmission	433.82–434.02 MHz@–10 dBm
Port	
RS-485	1
I/O	9
Status Output	2 channels. Outputs signals when the arm is in the open or closed position.
Function	
Anti-drop	Yes, can be realized by connected radar, loop, or IR.
Auto Lifting against Obstruction	Yes
Count Mode	Yes
Hand Crank Control in Power Failure	Yes
Limit Description	Adjustable
Remote Control	Supports remote control at a maximum distance of 30 m (98.43 ft) when there is no interference.
Number of Pairable Remote Controllers	30
Power Output	12 V ± 5% (1A)
General	
Power Supply	220 VAC ± 10%/110 VAC ± 10% 220 VAC ± 10%/110 VAC ± 10% (can be changed with the DIP switch)
Power Consumption	<200 W
Spring Lifespan	800,000 times
Motor Lifespan	3 million times
Operating Temperature	–35 °C to +65 °C (–31 °F to +149 °F)
Storage Temperature	–35 °C to +65 °C (–31 °F to +149 °F)
Operating Humidity	10%–90% (RH), non-condensing
Storage Humidity	10%–90%, non-condensing
Protection	IP54
Product Dimensions	335.0 mm × 285.0 mm × 930.0 mm (13.19" × 11.22" × 36.61") (L × W × H)
Packaging Dimensions	1,020.0 mm × 365.0 mm × 470.0 mm (40.16" × 14.37" × 18.50") (L × W × H)
Net Weight	40.0 kg (88.18 lb)
Gross Weight	45.0 kg (99.21 lb)
Installation	It can be secured with screws at the bottom.

Ordering Information		
Type	Model	Description
Barrier	DHI-IPMECD-1051-LM1515-T28	Left folding arm barrier 1.5 m–1.5 m(2.8 s)
	DHI-IPMECD-1051-LM1525-T30	Left folding arm barrier 1.5 m–2.5 m(3 s)
	DHI-IPMECD-1051-LM2525-T50	Left folding arm barrier 2.5 m–1.5 m(5 s)
	DHI-IPMECD-1051-RM1515-T28	Right folding arm barrier 1.5 m–1.5 m(2.8 s)
	DHI-IPMECD-1051-RM1525-T30	Right folding arm barrier 1.5 m–2.5 m(3 s)
	DHI-IPMECD-1051-RM2525-T50	Right folding arm barrier 2.5 m–2.5 m(5 s)
	DHI-IPMECD-1052-LM30-T15	Left straight arm barrier 3 m (1.5 s)
	DHI-IPMECD-1052-LM3040-T28	Left telescopic arm barrier 3-4 m (2.8 s)
	DHI-IPMECD-1052-LM4050-T48	Left telescopic arm barrier 4-5 m (4.8 s)
	DHI-IPMECD-1052-LM5060-T55	Left telescopic arm barrier 5-6 m (5.5 s)
	DHI-IPMECD-1052-RM30-T15	Right straight arm barrier 3 m (1.5 s)
	DHI-IPMECD-1052-RM3040-T28	Right telescopic arm barrier 3-4 m (2.8 s)
	DHI-IPMECD-1052-RM4050-T48	Right telescopic arm barrier 4-5 m (4.8 s)
	DHI-IPMECD-1052-RM5060-T55	Right telescopic arm barrier 5-6 m (5.5 s)
	DHI-IPMECD-1053-LM30-T35	Left Fence arm barrier 3m (3.5 s)
	DHI-IPMECD-1053-LM35-T42	Left Fence arm barrier 3.5m (4.2 s)
	DHI-IPMECD-1053-LM40-T55	Left Fence arm barrier 4m (5.5 s)
	DHI-IPMECD-1053-LM45-T60	Left Fence arm barrier 4.5m (6 s)
	DHI-IPMECD-1053-RM30-T35	Right Fence arm barrier 3m (3.5 s)
	DHI-IPMECD-1053-RM35-T42	Right Fence arm barrier 3.5m (4.2 s)
	DHI-IPMECD-1053-RM40-T55	Right Fence arm barrier 4m (5.5 s)
	DHI-IPMECD-1053-RM45-T60	Right Fence arm barrier 4.5m (6 s)
	DHI-IPMECD-1052-LM2745	Left telescopic arm barrier 2.7m-4.5m
	DHI-IPMECD-1052-RM2745	Right telescopic arm barrier 2.7m-4.5m
	DHI-IPMECD-1052-LM4560	Left telescopic arm barrier 4.5m-6.0m
	DHI-IPMECD-1052-RM4560	Right telescopic arm barrier 4.5m-6.0m

Barrier Rod	IPMECD-0151-M1515	Folding arm 1.5 m–1.5 m (no distinction between left and right)
	IPMECD-0151-M1525	Folding arm 1.5 m–2.5 m (no distinction between left and right)
	IPMECD-0151-M2525	Folding arm 2.5 m–2.5 m (no distinction between left and right)
	IPMECD-0152-M30	straight arm 3 m (no distinction between left and right)
	IPMECD-0152-M3040	Telescopic arm 3-4m (no distinction between left and right)
	IPMECD-0152-M4050	Telescopic arm 4-5m (no distinction between left and right)
	IPMECD-0152-M5060	Telescopic arm 5-6m (no distinction between left and right)
	IPMECD-0153-LM30	Left Fence arm 3 m
	IPMECD-0153-LM35	Left Fence arm 3.5 m
	IPMECD-0153-LM40	Left Fence arm 4 m
	IPMECD-0153-LM45	Left Fence arm 4.5 m
	IPMECD-0153-RM30	Right Fence arm 3 m
	IPMECD-0153-RM35	Right Fence arm 3.5 m
	IPMECD-0153-RM40	Right Fence arm 4 m
	IPMECD-0153-RM45	Right Fence arm 4.5 m
Anti Smashing Radar	DHI-ITSJC-2303-DC12	Dahua Anti Smashing Radar



Installation



Dimensions (mm [inch])

